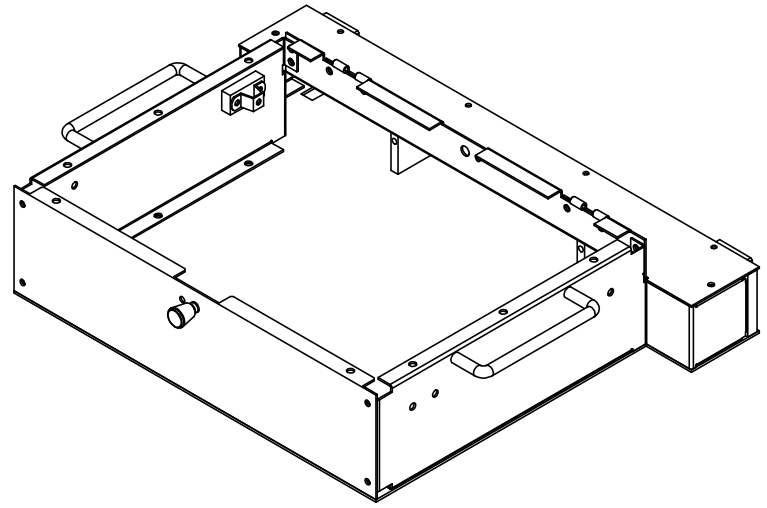
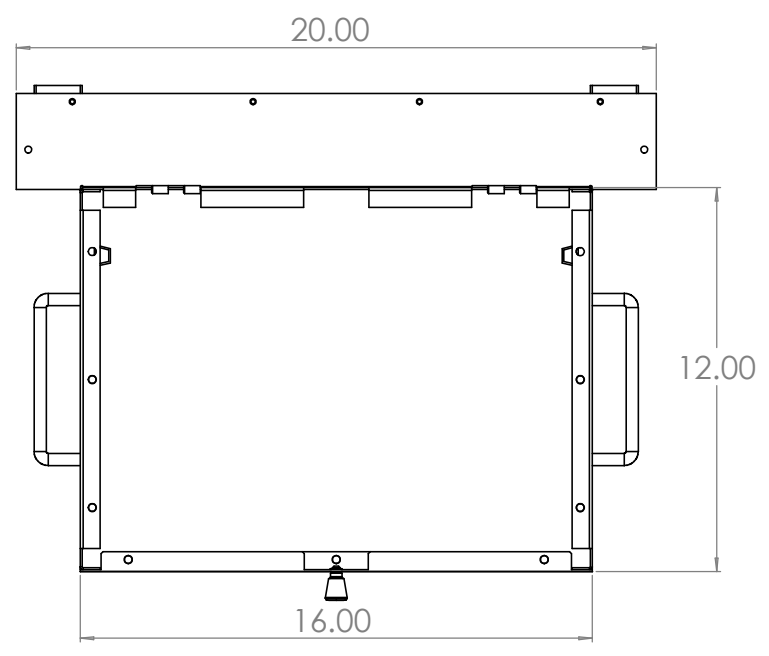
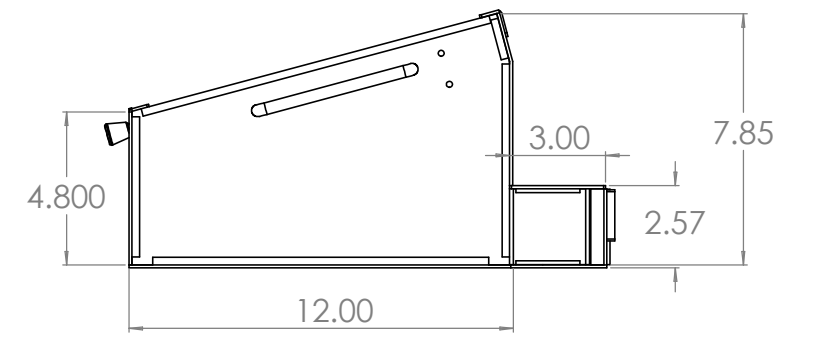
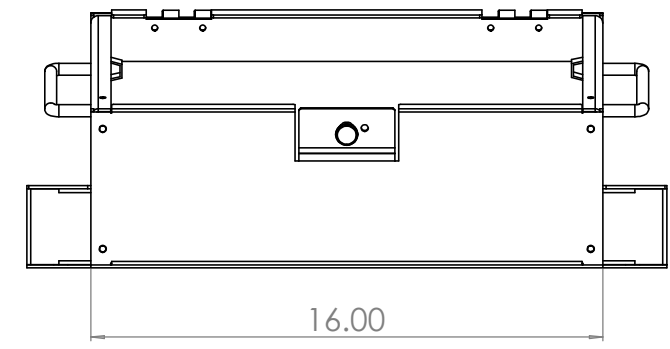
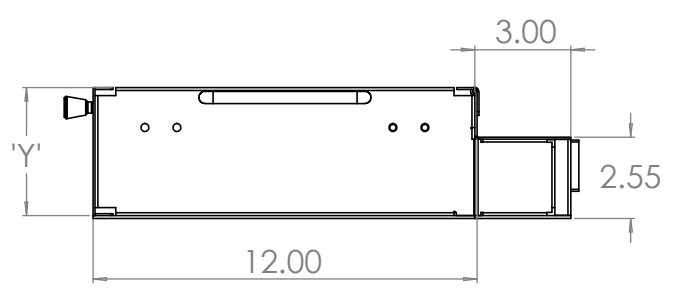
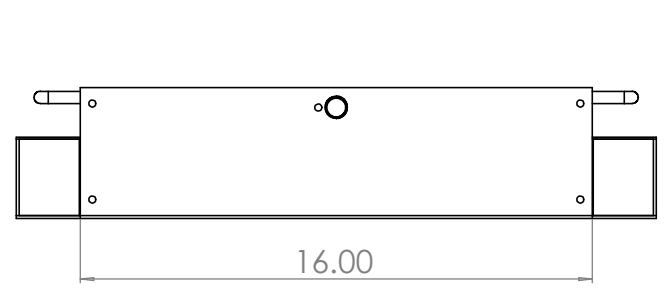
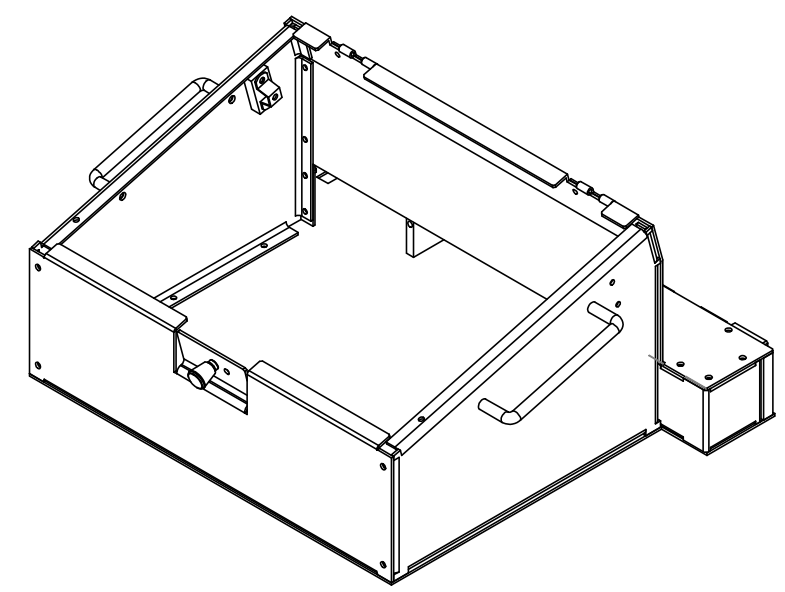
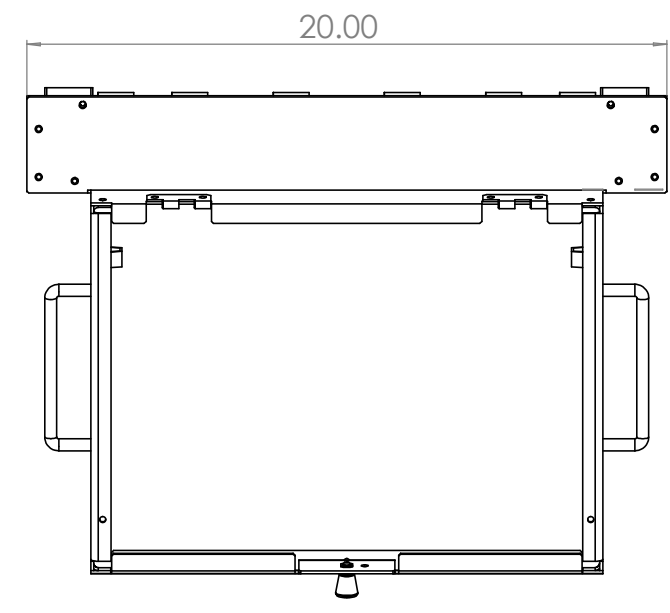


| REV | DESCRIPTION | WHO | DATE |
|-----|-------------------------------------|-----|------|
| A | RELEASED PER ORIGINAL SPECIFICATION | | |

ASM-3004-P




ASM-3004-SLP



| General Table | |
|---------------|---------------|
| ASM NUMBER | Y |
| ASM-3004 | 2.5, 4.0, SLP |

MATERIAL:
TREATMENT/FINISH:
NEXT ASSEMBLY:

| | | |
|---|------------|--|
| INTERPRET GEOMETRIC & ELECTRICAL SYMBOLS PER ANSI STANDARDS | DRAWN BY | 14 HIGH STREET PLAINVILLE, MA 02762 (508) 384-8303  |
| UNLESS OTHERWISE SPECIFIED USE THE FOLLOWING | DATE | |
| DEBURR & BREAK ALL SHARP EDGES APPROXIMATELY 0.01 ± 45° | CHECKED BY | |
| | DATE | |

DATE: 7/15/2024

| TOLERANCE ON DIMENSIONS | 125 | MAXIMUM MACHINE FINISH | LAST SAVED BY |
|-------------------------|--------|------------------------|---------------|
| | INCH | METRIC | DATE |
| 2 PLACE | ±.01 | ±.25mm | |
| 3 PLACE | ±.005 | ±.127mm | |
| 4 PLACE | ±.0005 | ±.0127mm | |
| ANGLES | ±30' | ±30' | |

DESCRIPTION: ASM-3004 SERIES 3000 PAN DIMENSIONS

SCALE 1:2 SHEET 1 of 1

DRAWING VIEWS PROJECTED USING 3RD ANGLE

SEMCO PROPRIETARY
THIS DOCUMENT IS THE PROPERTY OF SEMCO MACHINE CORPORATION. IT IS TO BE RETURNED UPON REQUEST. REPRODUCTION BY ANY MEANS, DISCLOSURE, OR USE OF ITS CONTENTS FOR WHICH IT IS LOANED, WITHOUT WRITTEN CONSENT OF SEMCO MACHINE CORPORATION IS STRICTLY PROHIBITED.